

N2KView®

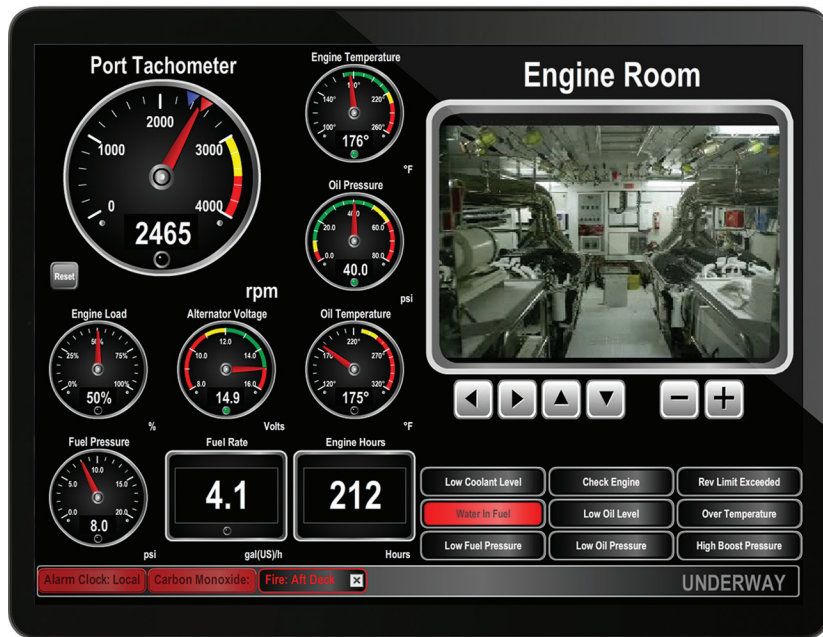
Vessel Monitoring and Control Software

Whether you are interested in monitoring your vessel's systems while underway or remotely from your home or office, N2KView® software displays the information you need including engines, generators, tanks, rudders, navigation instruments, and more. N2KView® is completely user-configurable and you are free to create different screens for your exact needs while easily switching from screen to screen for monitoring all your systems. Digital displays, analog gauges, graphic displays, warning lights, and bar graphs, all can be configured exactly how you want them to be. You can even set the operating limits and color bands for analog gauges so you know when things are within limits and when they are not.

N2KView® is a comprehensive vessel monitoring and control software that goes beyond simple monitoring. With N2KView® you get additional functionality including alerts, video, switch control, anchoring supervision, and fuel management. The alerts functionality allows you to set up as many warnings and alarms as you need so you can be forewarned of potential problems. With alerts, you can relax knowing that the system is watching for smoke, carbon monoxide, high bilge water, or anything else you deem important. N2KView® video capability allows you to add cameras as part of the monitoring system—for example a camera in the engine room—or the cameras can be used as part of the

security system. The control functionality gives you the ability to manage your electrical system; for example, you can turn lights or pumps on or off directly from N2KView® and even tell if the lights or pumps are burned out and not working. Lastly, the fuel management function uses information from the fuel flow monitor, tank monitors, and GPS to provide advanced information like distance and time to empty as well as fuel rate and fuel economy.

N2KView® software can run on your vessel's computer or on standalone products like the Maretron TSM810C display (page 20), or the Maretron Black Box (MBB300C) vessel monitoring system (page 22). If you want to run N2KView® software on your vessel's computer, you will need either a Maretron USB100 (page 32) or an IPG100 (page 34), to get sensor information from the NMEA 2000® network to the computer.

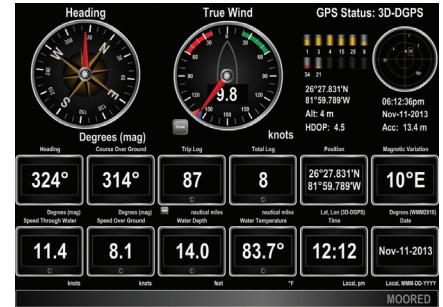


PRODUCT

PART NUMBER	DESCRIPTION
N2KView®	N2KView® Vessel Monitoring and Control Software for Personal Computer
N2KView® Add	N2KView® Software License



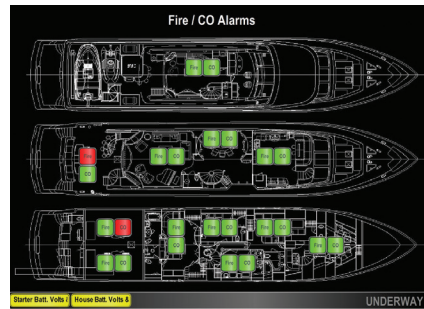
Anchor Watch



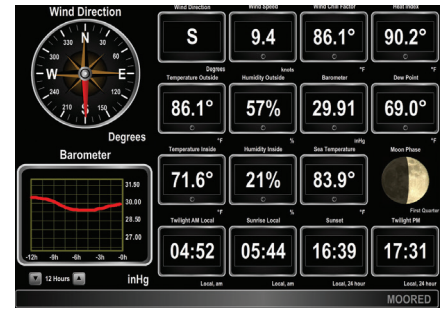
Navigation



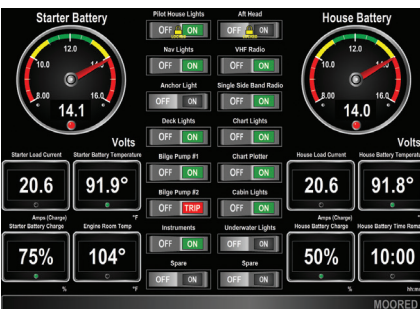
Engines



Fire Alarms



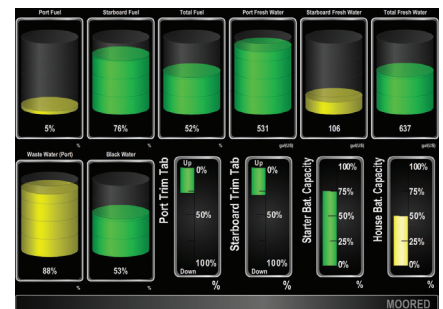
Environment



DC Systems



AC Systems



Tank Levels

WINDOWS PC SERVER/CLIENT SYSTEM REQUIREMENTS

PARAMETER	VALUE	COMMENT
Operating System	7/8/10/11	Latest service packs may be required for support
CPU Minimum	Intel Atom	
CPU Recommended	Intel Core i3	
Memory Minimum	512MB RAM	
Memory Recommended	1GB RAM	
Hard Drive Space	100 MB	
Video Card Minimum	128 MB	
Video Card Recommended	256 MB	
USB Ports	2.0 or 3.0 Compatible	Required to connect through USB100, or to load software from shipped media
Network Connections	10/100/1000Base-T or 802.11 b/g/n/ac/ax	Only required if connecting through IPG 100 or viewing network based cameras
Display Minimum	800 x 480 Resolution 32-bit Color Video	