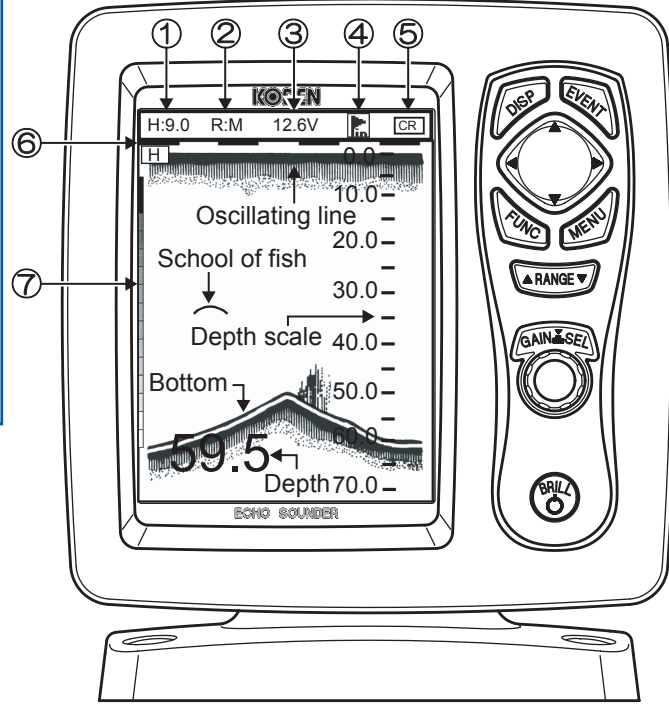


- ① Gain setting
H: High frequency
L: Low frequency

* The number shows the present set value of gain.
AF: Fishing mode
AC: Cruising mode
- ② Range mode
R:M: Manual
R:A: Auto range
R:AS: Auto shift
- ③ Power Voltage
- ④ Alarm Set Status
Arrival alarm
XTE alarm
Speed alarm
Water temp alarm
- ⑤ Status of [FUNC] key assignment

← Image speed	← Shift
← Interference rejection	← Zoom range
← Color rejection	← Zoom start
← Noise rejection	← Background color
← Range mode	← White line
- ⑥ Time mark
- ⑦ Rainbow pattern



Select the display menu ([DISP] key)

Press →

Disp
NAV1/ Normal (H)
Normal (H)
Zoom (H)
Dual Freq
Zoom (L)
Normal (L)
NAV2/ Normal (L)

Press → Press

Press → Press

Press → Rotate → Press

※ Select by performing either operation.

Select the setting of preset function ([FUNC] key)

The function differs depending on the [FUNC Key setting].
In case of [Image speed]:

Press →

Image Speed
2/1
1/1
stop
1/1.5
1/2
1/2.5
1/3
1/3.5
1/4
1/4.5

Press → Press

Press → Rotate → Press

※ Select by performing either operation.

Select the range ([RANGE] key)

Press →

Range
20.0
30.0
40.0
50.0
60.0
70.0
80.0
90.0

Press → Press

Press → Press

Press → Rotate → Press

※ Select by performing either operation.

Gain select/ Gain adjust ([Knob])

Press →

Gain Select
Manual
Cruising
Fishing

Rotate

① Gain 9.0 → Rotate → Press

② Auto adjust 0 → Rotate → Press

※ When the manual is selected:
※ When the Cruising mode is selected:
※ When the Fishing mode is selected:

Rotate → When rotating the [Knob], the menu of either ① or ② is displayed. (The menu of the previous operation is displayed.)

Preset the destination / Preset the image ([EVENT] key)

Depending on the [EVENT key set], the function differs.
In case of [Store pos]:

Press → Store the destination.

In case of [Store image]:

Press → Store the image of echo sounder.

※ The navigation data such as GPS is necessary.

Display the menu ([MENU] key)

Press →

Adjust	Image speed	1/1
D.range	IR	Strong
Image	Color rejection	0%
Alarm1	Noise rejection	0
Alarm2	TVG	Medium
NAV	TX power	Auto
Disp	Return	
Sonar		
Next		

Press

※ The menu appears.
※ The menu closes.

Power on /Power off ([BRILL] key)

Power on.



Press

Power off.



Keep pressing for more than 3 seconds.

Adjust the brilliance ([BRILL] key)

Press →

Panel brill
10

Rotate → Press

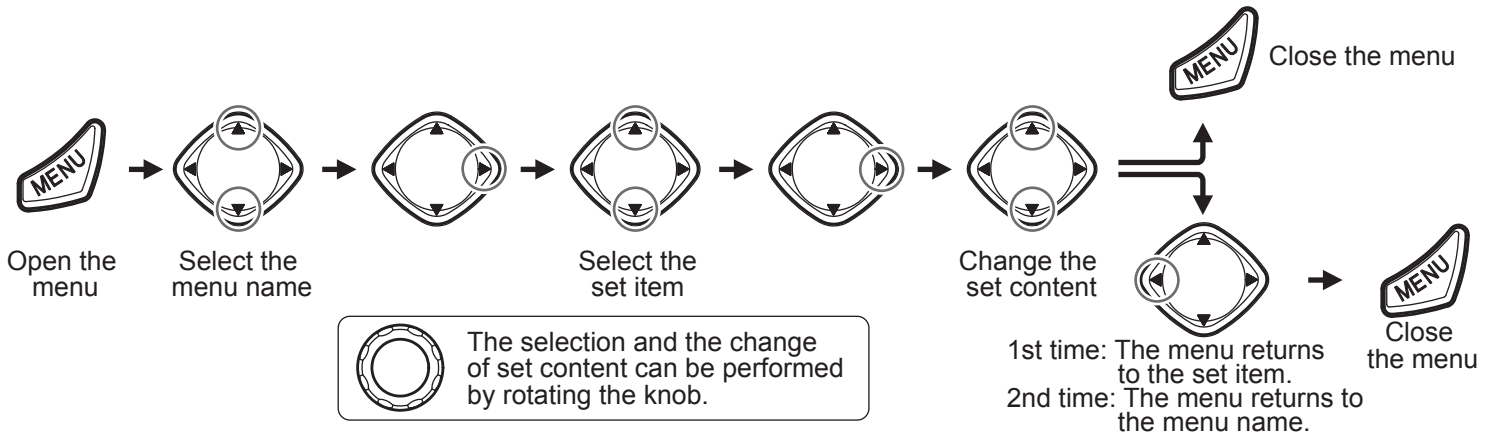
Press →

Lcd brill
10

Rotate → Press

※ Every time when pressing the [Brill] key, the item is alternately displayed.

● How to operate the menu



● Function of Adjust Set Menu

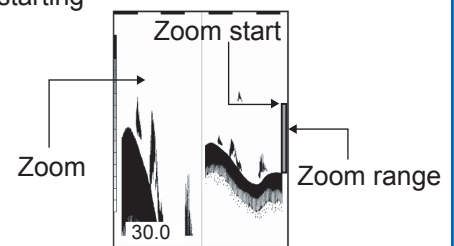
Adjust	Image speed	1/1	①
D.range	IR	Strong	②
Image	Color rejection	0%	③
Alarm1	Noise rejection	0	④
Alarm2	TVG	Medium	⑤
NAV	TX power	Auto	⑥
Sonar	Return		
Next			

- ① Change the image speed.
The image speed becomes slow in order of [2/1] → [1/1] → [1/4.5].
When [stop] is selected, the image stops.
- ② It rejects the interference with other echo sounder.
When [Strong] is selected, the effect of rejection is strong.
- ③ It rejects the weak noise appearing on the display.
The greater the number is, the stronger the rejection becomes.
- ④ It rejects the speck-like noise appearing on the entire image.
The greater the number is, the stronger the rejection becomes.
- ⑤ Set the TVG.
The deep depth gain increases in order of [Weak] → [Medium] → [Strong].
- ⑥ It sets the TX power.

● Function of display range set menu

Adjust	Range mode	Manual	①
D.range	Shift	0m	②
Image	Zoom type	BTM.	③
Alarm1	Zoom range	10.0m	④
Alarm2	Zoom start	0m	⑤
NAV	Range preset		⑥
Sonar	Return		
Next			

- ① It changes the setting of range.
[Auto range]: It displays in the optimum range so that the bottom is always displayed.
[Auto shift]: The image shifts up and down so that the bottom is always displayed.
- ② It displays the image within the range starting with the set value.
- ③ It selects the zoom type in the image mode.
- ④ It sets the zoom range selected in ③.
- ⑤ It sets the zoom starting position of image set in ③.
- ⑥ It presets the range.



● Function of display set menu

Adjust	A scope	OFF	①
D.range	White line	OFF	②
Image	Background color	Dark blue	③
Alarm1	Color tone	64 color	④
Alarm2	Depth value	Large	⑤
NAV	Water temp graph	OFF	⑥
Sonar	Return		
Next			

- ① It displays the strength of present echo as an amplitude image.
- ② It displays the surface of bottom in white
- ③ It selects the background color of display.
- ④ It selects the color tone of echo.
- ⑤ It selects the letter size of depth and depth scale.
- ⑥ It displays the present water temperature graph.

